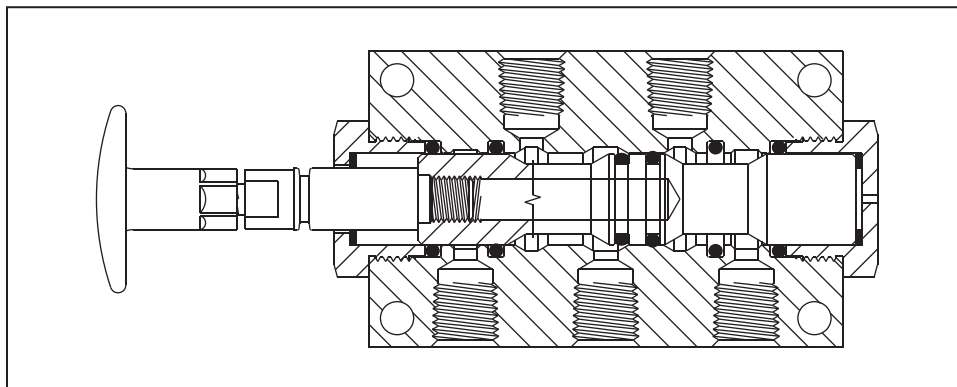
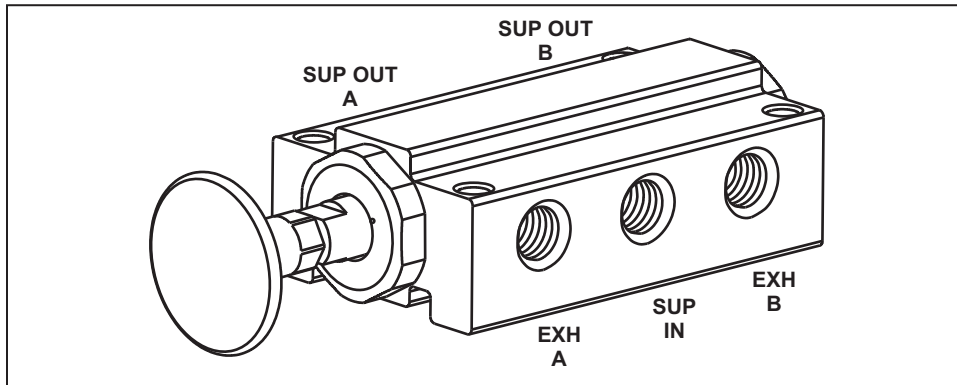


# MISCELLANEOUS VALVES

## 5 Port / 2 Way Valve - Manual



### INFORMATION:

- Commonly used to operate lift axle control functions
- Commonly used to operate air cylinders for bottom dump gates
- Piping examples on page 75

PART NUMBER	PORT SIZES (NPT)		
	Supply In	Supply Out	Exhaust
110052	1/4"	1/4"	1/4"