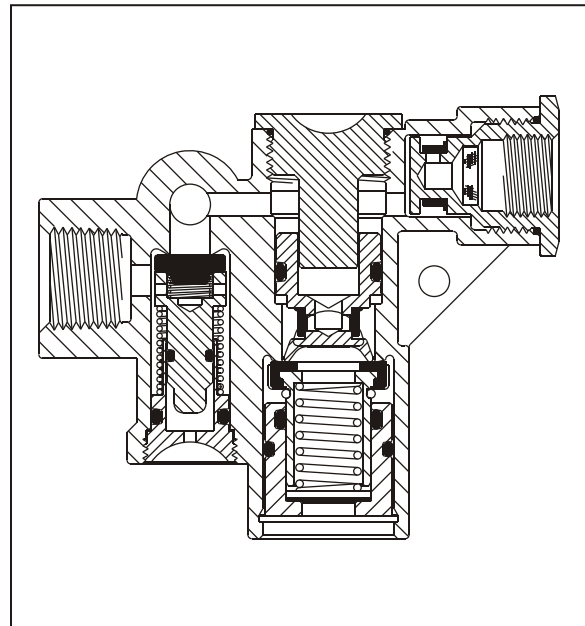
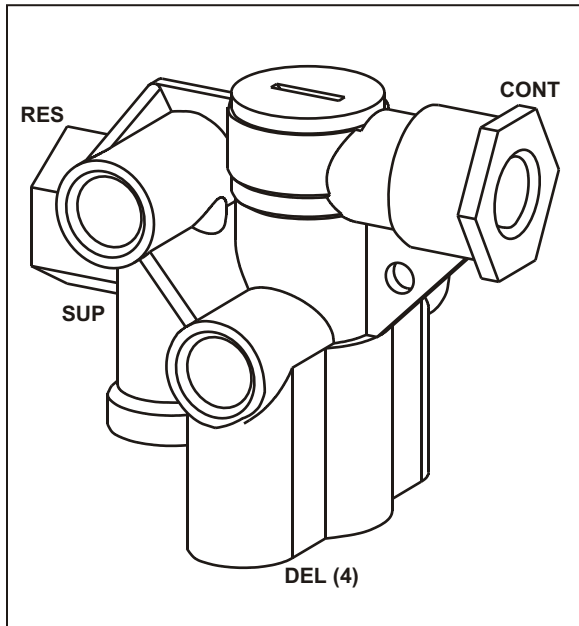


SPRING BRAKE CONTROL VALVES

Spring Brake Control Valve – Spring Brake Priority



INFORMATION:

- The spring brake priority immediately provides supply air to release the spring brakes, the internal Pressure Protection Valve opens to also fill the reservoir at approximately 80 psi
- Also supplies air to release the spring brakes from the trailer air reservoir when available for faster release times
- Complies with all changes to FMVSS 121, Docket 90-3 effective October 8, 1992
- Designed for use with a single reservoir on a typical single or tandem axle trailer
- May also be used with two 1,400 cubic inch (nominal) reservoirs on tandem axle trailers
- Direct replacement for Bendix's SR-5 spring brake control valve
- Mounting Hardware on pages 61 & 62
- Piping examples on pages 71, 72, 74, 75 & 76
- Conversion from Bendix SR-5 on page 77
- **PLUG UNIT ASSEMBLY 110705** for movable seat
- **PLUG UNIT ASSEMBLY 110515** for pressure protection

PART NUMBER	PORT SIZES (NPT)			
	Supply	Control	Reservoir	Delivery (4)
110800	3/8"	3/8"	1/2"	3/8"